

نشرة إحصائيات الثروة السمكية

2006

استعراض موجز لإحصاءات الثروة السمكية في إمارة أبو ظبي



+ : + :
P.O. Box: 45553, Abu Dhabi, United Arab Emirates, Telephone: +971 2 6817171 Fax: +971 2 6810008
Website: www.ead.ae E-mail: ead@ead.ae



	2006	2001
	5.830	35.099
	(791)	(2.908)
2.823	(1.101)	(1.180)
60.7		

	2006
15.8	(<i>Epinephelus coioides</i>)
14.8	(<i>Scomberomorus commerson</i>)
12	(<i>Carangidae</i>)



شكل 1 : محصول صيد اليوم معروض للبيع بالسوق



:2



:3

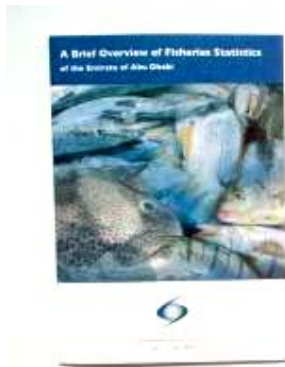


. 2006

:4



() :6



2004-2001



:5

3



() :7

22-12

5 3
6-4

4

299 742)2006 2006

1100 .(

()

() ()



() ()

:8

125

()

()
()
()



:9

5

35

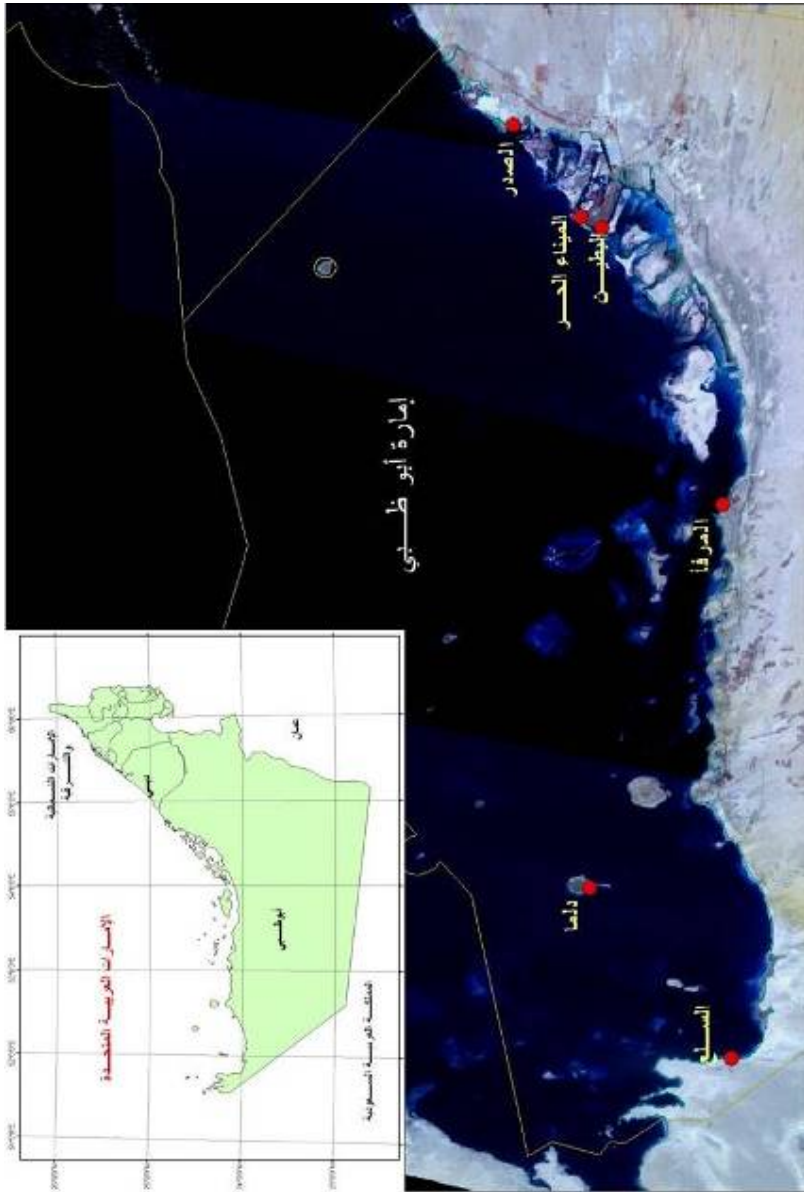
100

() *Lutjanidae* () *Lethrinidae* () *Serranidae* :
() *Carangidae* () *Spariidae* () *Haemulidae*
() *Scombridae*



10 :

6

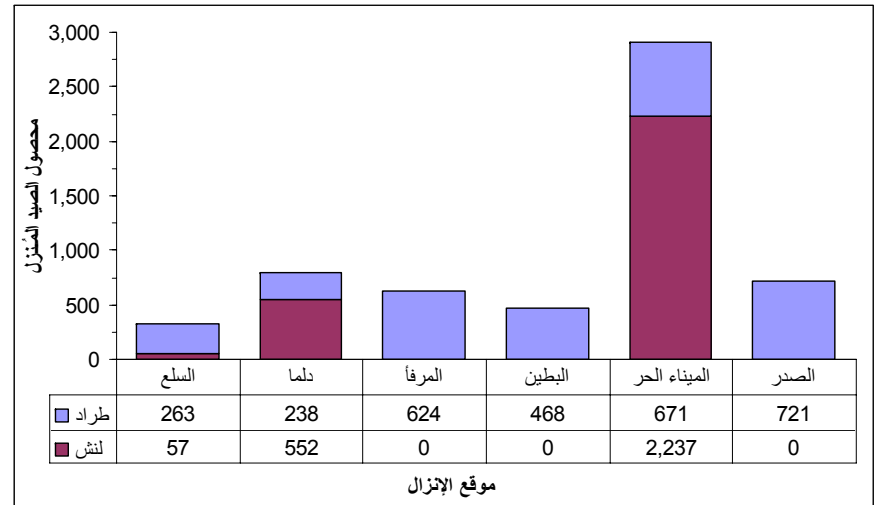


: 11

2006 5.830 %51 %49

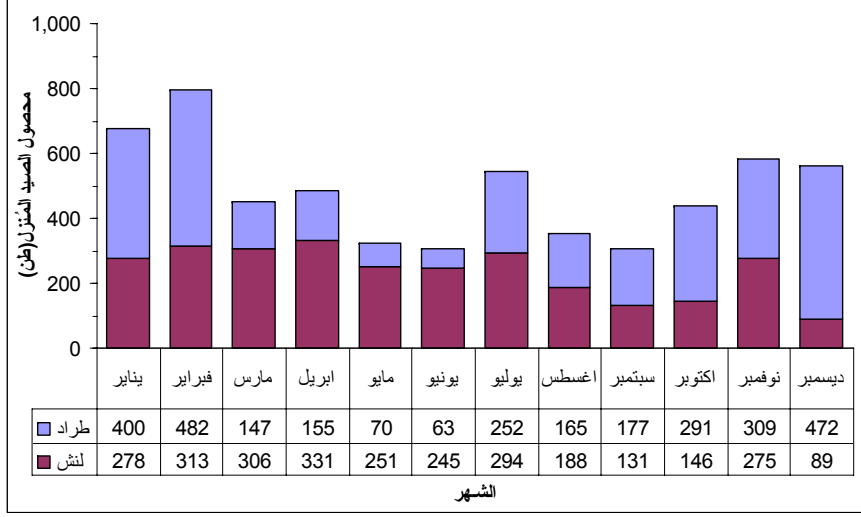
2006 12

(%98)



2006

: 12



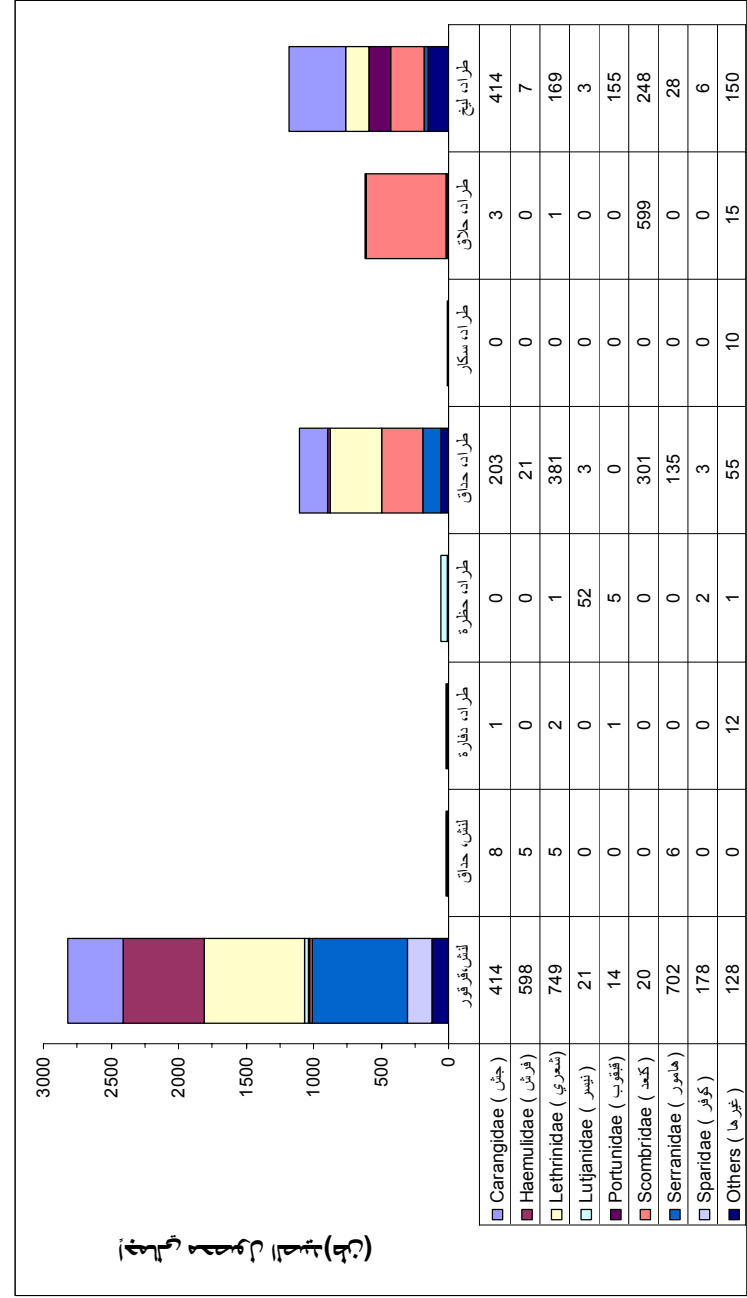
2006 : 13

2006

13

(-)

(*Scomberomorus commerson*)



: 14

14

() ()
 %48) ()
 %11 %19 %20 () ()
 2006

16

(%25) *Serranidae* (%27) *Lethrinidae*
 (%15) *Carangidae* (%21) *Haemulidae*

2006

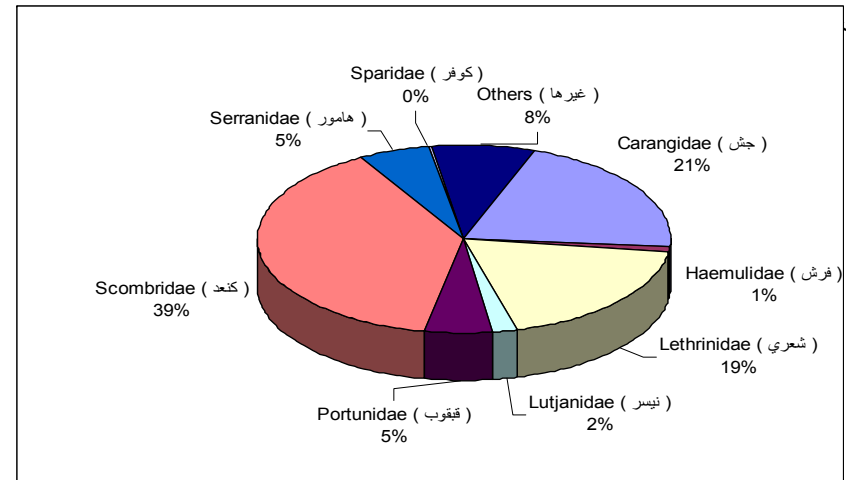
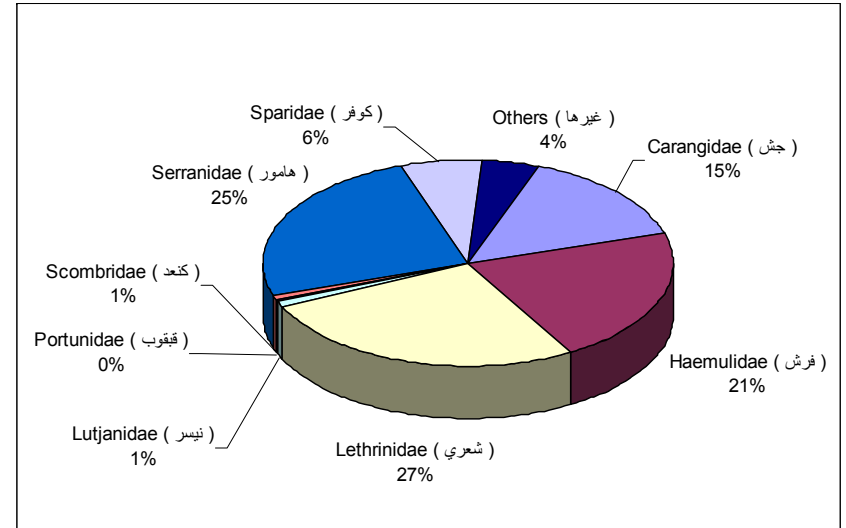
(%39) *S. commerson*

(%19) *Lethrinidae*. (%21) *Carangidae*



: 15

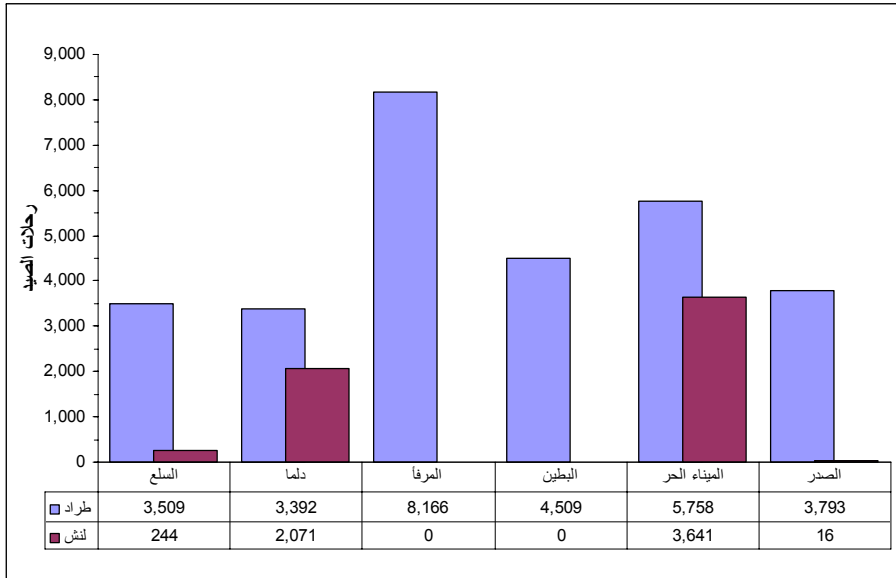
11



() ()

: 16

12



2006

: 17

(14-12)

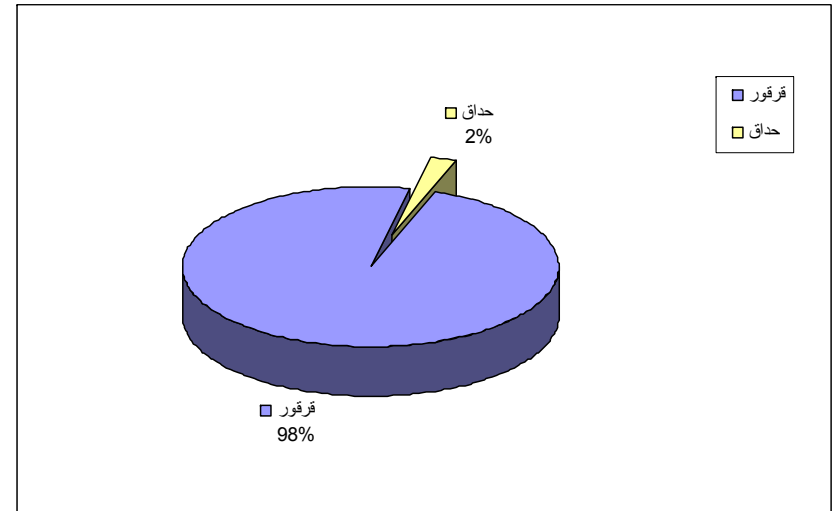
.(17%)

(83%)

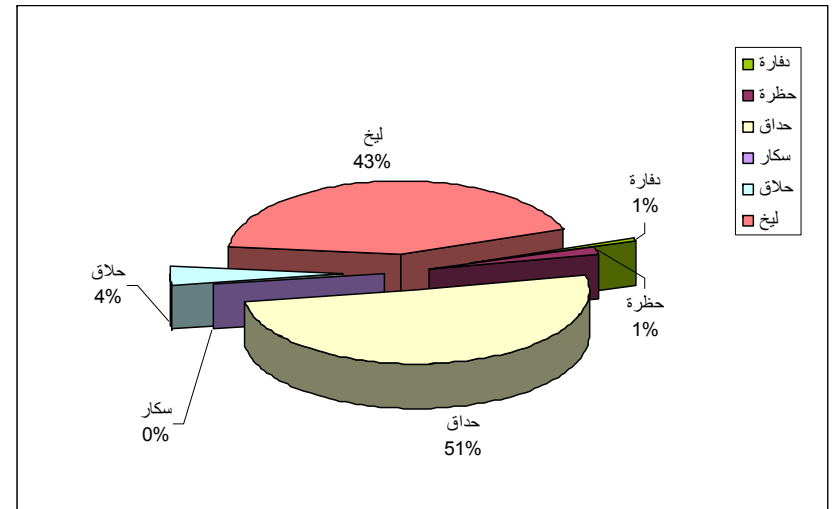


:18

13



أ



ب

()

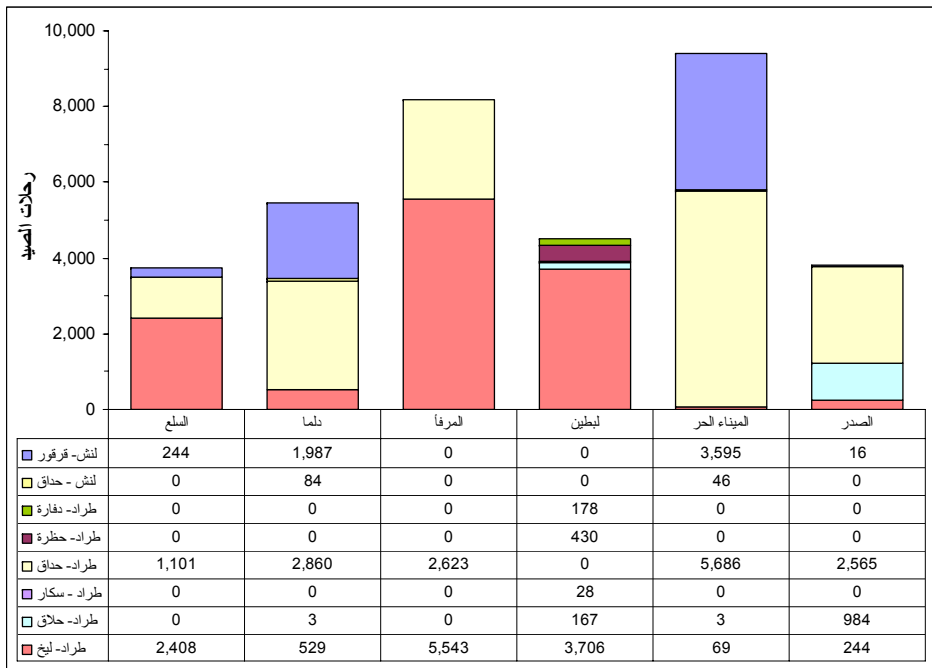
()

:19

14

(19)
(*Epinephelus coioides*)

(19) () ()



: 20



() : 21

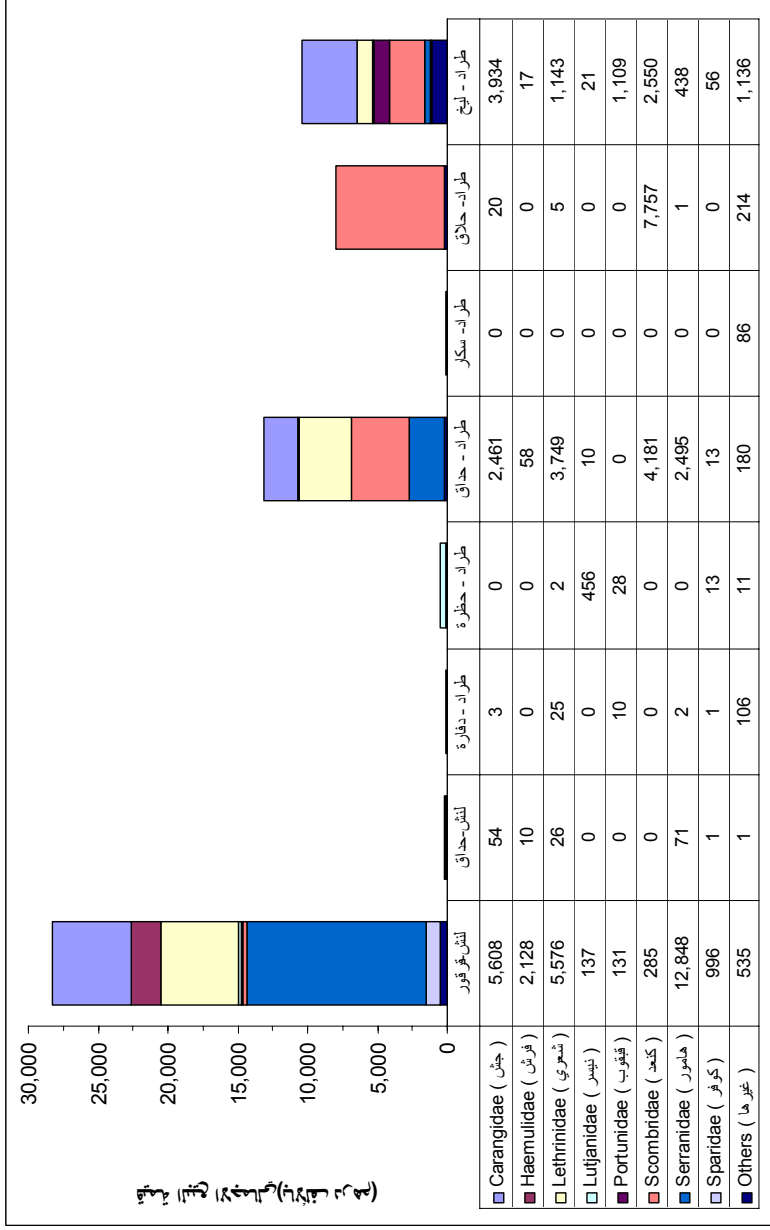
25 24

22

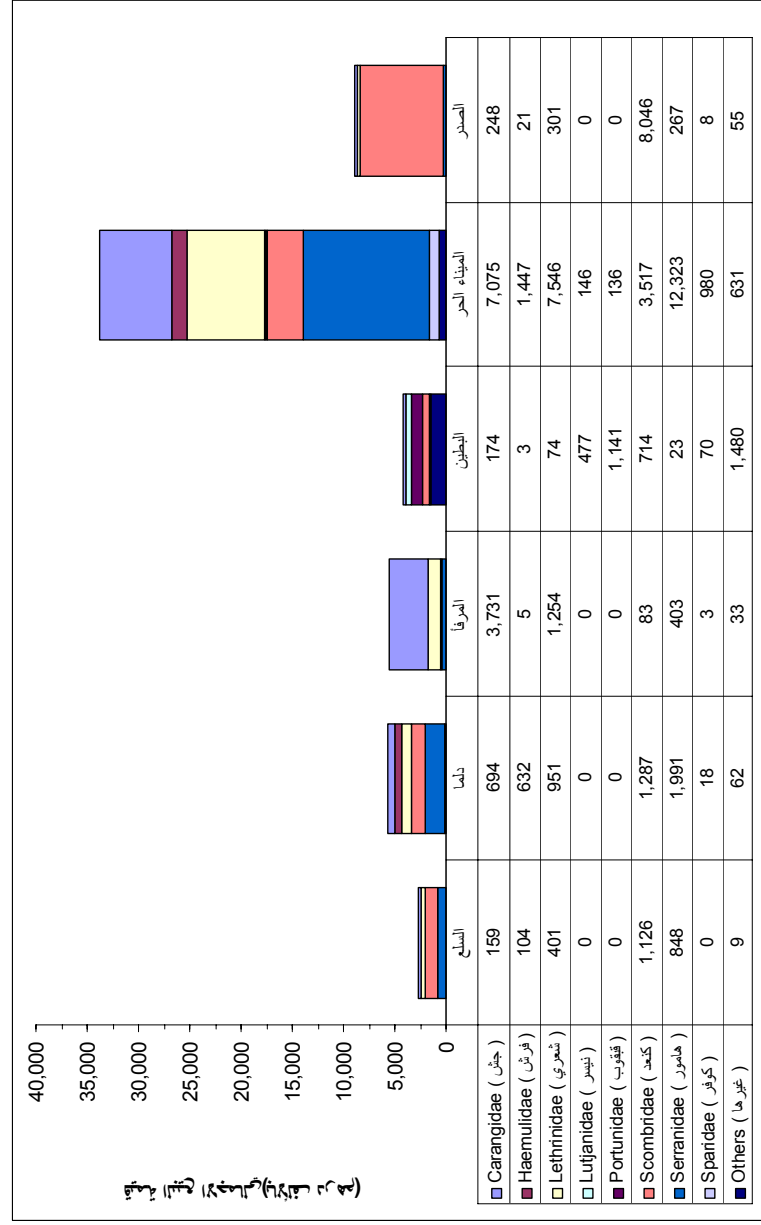
60.7 2006

%53

%47



:24



شكل 25 : القيمة الإجمالية للعائلات الرئيسية من الأسماك حسب موقع الإنزال.

